



GUIDE PRICE

£500,000

Sparkes Close

, BR2 9GE

PROPERTY SUMMARY

GUIDE PRICE £500,000 - £550,000 CHAIN FREE. An outstanding two-bedroom house built by Barratt Homes in 2004. Set in this gated residential development in a prime location approximately 0.3 miles from Bromley South station and town centre. The bright and spacious accommodation briefly comprises an entrance hall, cloakroom and kitchen leading to spacious living/dining room with direct access onto private garden. To the first floor are to be found two double bedrooms both with ensembles and built-in storage. The property also comes with private allocated parking for resident/owner and one visitor parking permit on site. Private side gated access to garden. A sought-after location that is rarely available, we strongly advise your internal inspection to appreciate the size and standard of accommodation on offer. EPC: C

COUNCIL TAX - D

Construction - Traditional
Mains Services - Gas, Electricity, Sewerage and metered Water supply
Heating System - Gas radiators
Broadband - Available
Mobile coverage - Available
Restrictive covenants - No

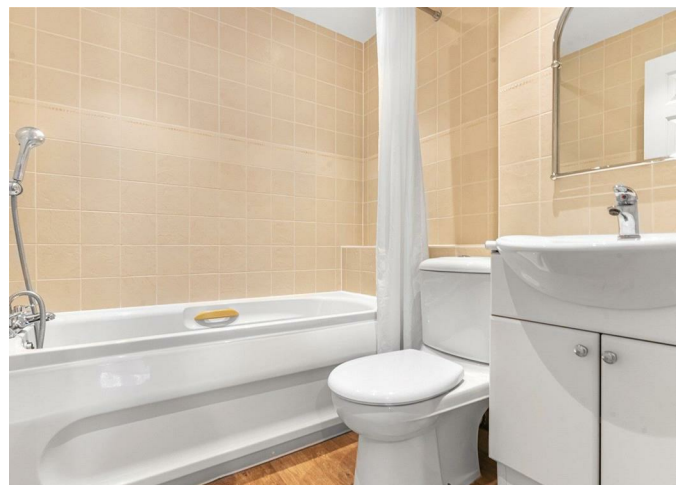
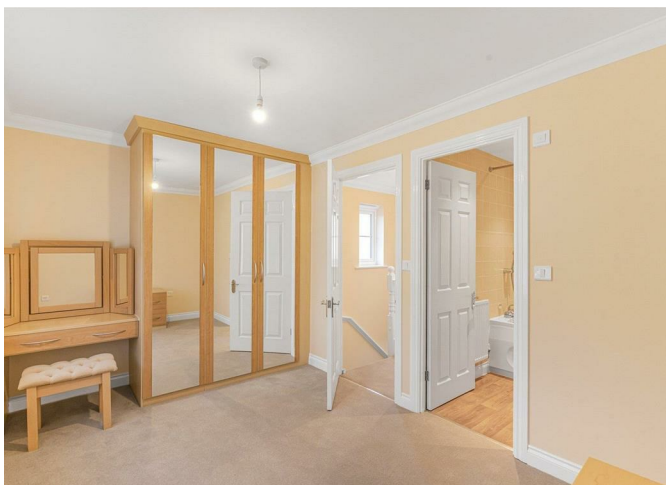
2



2



1

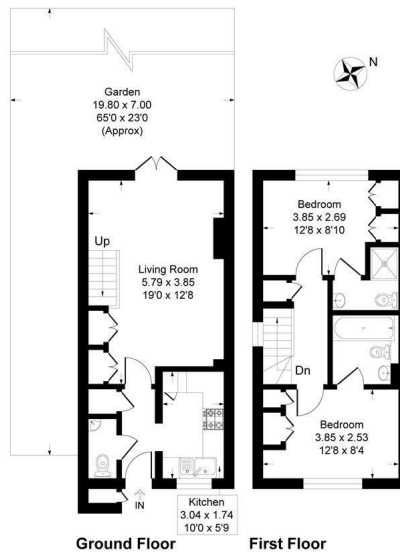






Sparkes Close, BR2

Approximate Gross Internal Area 65.8 sq m / 709 sq ft



This plan is for layout guidance only. Not drawn to scale unless stated. Windows and door openings are approximate. Whilst every care is taken in the preparation of this plan, please check all dimensions, shapes and compass bearings before making any decisions reliant upon them.
Produced By Planix

2

2

1

Energy Efficiency Rating		
	Current	Potential
Very energy efficient - lower running costs		
(92 plus) A		
(81-91) B		
(69-80) C	72	86
(55-68) D		
(39-54) E		
(21-38) F		
(1-20) G		
Not energy efficient - higher running costs		
England & Wales		EU Directive 2002/91/EC

EPC RATING: C COUNCIL TAX BAND: D

Agents Note: Whilst every care has been taken to prepare these particulars, they are for guidance purposes only. All measurements are approximate and are for general guidance purposes only and whilst every care has been taken to ensure their accuracy, they should not be relied upon and potential buyers/tenants are advised to recheck the measurements

Sinclair Hammelton

OFFICE ADDRESS
23 High Street
Bromley
Kent
BR1 1LG

OFFICE DETAILS
0208 464 5566
info@sinclairhammelton.co.uk